



# ILPQC Overview

December 23, 2015

# ILPQC Overview

- Statewide perinatal quality collaborative that involves all perinatal stakeholders
- Utilizes data-driven, evidence-based practices
- Improves perinatal quality resulting in improved birth outcomes, improved health for women and infants, and decreased costs

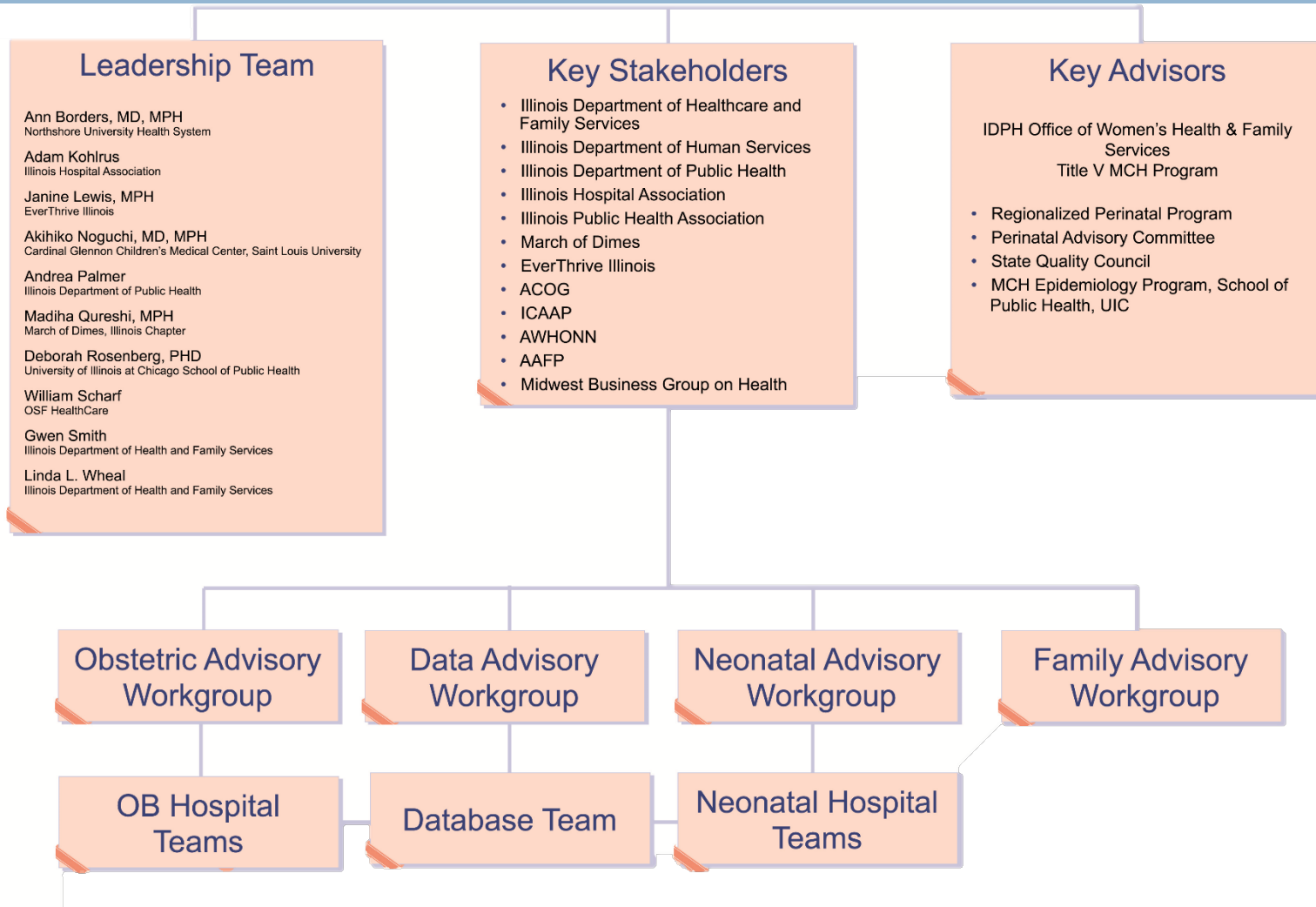


# ILPQC Goals



- Develop a collaborative network of perinatal stakeholders (focused on birthing hospitals with obstetric and neonatal leadership teams) committed to improving perinatal safety, efficiency, quality of care, and outcomes for women and infants.
- Educate stakeholders on improvement science and best practice, and use improvement science to design, implement and evaluate data driven, evidence-based processes to improve the quality of perinatal care.
- Utilize a statewide database with real-time data collection, analysis, and reporting capability.
- Assure that each initiative undertaken adds value for all perinatal stakeholders, optimizes resources, spreads best practices, reduces variation, and promotes family and patient-centeredness.

# ILPQC Structure



## □ OB

### □ Present

- Early Elective Delivery
- Birth Certificate Accuracy

### □ Future

- Hypertension (Summer 2015)

## □ Neonatal

### □ Present

- Very Low Birth Weight Nutrition

### □ Future

- Golden Hour (March/April 2015)

THANKS TO OUR SPONSORS

